



EXPORT QUALITY SEAFOODS

SEAFOOD  
PRODUCT  
CATALOG

2026 

FISHTRADE COMPANY



# *Export Quality Seafood*

We are a seafood processing and exporting company based in Panama, strategically located on the Pacific coast and specialized in premium wild-caught fish from the Pacific Ocean. Our company focuses on delivering high-value seafood products to international markets, supplying species such as tuna and snapper, known for their exceptional freshness, and quality.

Our processing facility is registered with the FDA and operates under strict HACCP protocols and internationally recognized food safety standards. By maintaining strict cold-chain management and efficient logistics, we provide consistent, premium-grade seafood to clients across USA..



# FRESH SEAFOOD



# FRESH FISH

---

## YELLOWFIN TUNA



### SCIENTIFIC NAME

THUNNUS ALBACARES

### SIZE

40-59 & 60+ (LB)

### PACKAGING

100lb+ Styrofoam Boxes

### FORMAT

HGT Fresh

### ORIGIN

Panamá (Wild Caught)

## MAHI MAHI



### SCIENTIFIC NAME

CORYPHAENA HIPPIURUS

### SIZE

5-10, 10-15, 15+ (LB)

### PACKAGING

100lb Styrofoam Boxes

### FORMAT

HGT Fresh

### ORIGIN

Panamá (Wild Caught)

# FRESH FISH

---

## SILK SNAPPER



### SCIENTIFIC NAME

LUTJANUS PERU

### SIZE

1-2, 2-4, 4-6; 6+ (LB)

### PACKAGING

80lb Styrofoam Boxes

### FORMAT

Whole gutted Fresh

### ORIGIN

Panamá (Wild Caught)

## LANE SNAPPER



### SCIENTIFIC NAME

LUTJANUS GUTTATUS

### SIZE

1-2, 2-4, 4-6; 6+ (LB)

### PACKAGING

80lb Styrofoam Boxes

### FORMAT

Whole gutted Fresh

### ORIGIN

Panamá (Wild Caught)

# FRESH FISH

---



## YELLOW SNAPPER

### SCIENTIFIC NAME

LUTJANUS ARGENTIVENTRIS

### SIZE

1-2, 2-4, 4-6; 6+ (LB)

### PACKAGING

80lb Styrofoam Boxes

### FORMAT

Whole gutted Fresh

### ORIGIN

Panamá (Wild Caught)

---



## RED GROUPPER

### SCIENTIFIC NAME

EPINEPHELUS MORIO

### SIZE

1-3, 3-5, 5+ (LB)

### PACKAGING

80lb Styrofoam Boxes

### FORMAT

Whole gutted Fresh

### ORIGIN

Panamá (Wild Caught)

# FRESH FISH

---

## BROOM TAIL GROUPPER



### SCIENTIFIC NAME

MYCTEROPERCA XENARCHA

### SIZE

1-3, 3-5, 5+ (LB)

### PACKAGING

80lb+ Styrofoam Boxes

### FORMAT

Whole Guttled Fresh

### ORIGIN

Panamá (Wild Caught)

---

## GOLDEN CORVINA



### SCIENTIFIC NAME

CYNOSCION ACOUPA

### SIZE

5-10, 10-20, 20+

### PACKAGING

80lb+ Styrofoam Boxes

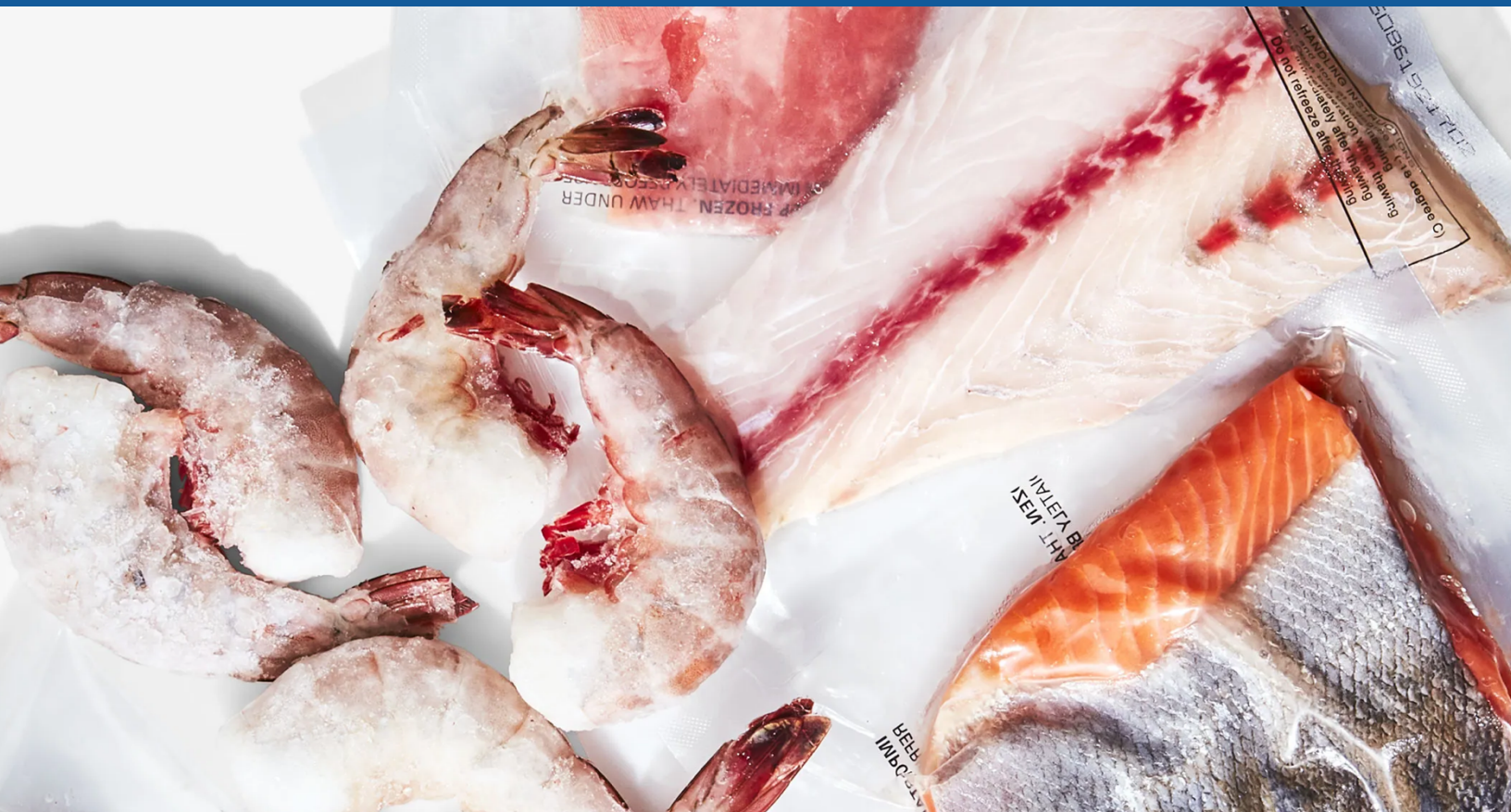
### FORMAT

HGT / FRESH

### ORIGIN

Panamá (Wild Caught)

# FROZEN SEAFOOD



# FROZEN FISH

---

## MAHI MAHI FILLET



### SCIENTIFIC NAME

CORYPHAENA HIPPIURUS

### SIZE

(LB)

### PACKAGING

10lb Boxes

### FORMAT

Frozen Skinless or Skin-On

### ORIGIN

Panamá (Wild Caught)

---

## SNAPPER FILLET



### SCIENTIFIC NAME

Lutjanus Peru/Guttatus/Argentiventris

### SIZE

8 / 16 oz

### PACKAGING

10 / 30lb Boxes

### FORMAT

IVP Frozen / Skinless or Skin-On

### ORIGIN

Panamá (Wild Caught)

# FROZEN FISH

---



## TUNA LOIN

### SCIENTIFIC NAME

TUNNUS ALBACARES

### SIZE

3-5 / 5-8 lb

### PACKAGING

10 / 30lb Boxes

### FORMAT

IVP / CO treated

### ORIGIN

Panamá (Wild Caught)



## TUNA STEAKS

### SCIENTIFIC NAME

TUNNUS ALBACARES

### SIZE

4-6-8-10 (OZ)

### PACKAGING

10 / 30lb Boxes

### FORMAT

IVP / CO treated

### ORIGIN

Panamá (Wild Caught)

# FROZEN FISH

---



## LOBSTER TAIL

### SCIENTIFIC NAME

PANULIRUS ARGUS

### SIZE

5- 24 OZ (LB)

### PACKAGING

IWP / 10LB Boxes

### FORMAT

Shell-on / Frozen IQF

### ORIGIN

Panamá (Wild Caught)

---

## WHITE SHRIMP



### SCIENTIFIC NAME

PANAEUS VANNAMEI

### SIZE

U8/U10/U12/U15

### PACKAGING

2/5 LB Pack /10 /30 /50 LB Box

### FORMAT

HSLO / Frozen IQF

### ORIGIN

Panamá (Wild Caught)

# FROZEN FISH

---

## LANE SNAPPER



**SCIENTIFIC NAME**

LUTJANUS GUTTATUS

**SIZE**

1-2/2-4 (LB)

**PACKAGING**

10LB Boxes

**FORMAT**

WGGs / Frozen / IVP

**ORIGIN**

Panamá (Wild Caught)

---

## SILK SNAPPER



**SCIENTIFIC NAME**

LUTJANUS PERU

**SIZE**

1-2/2-4 (LB)

**PACKAGING**

10LB Boxes

**FORMAT**

WGGs / Frozen / IVP

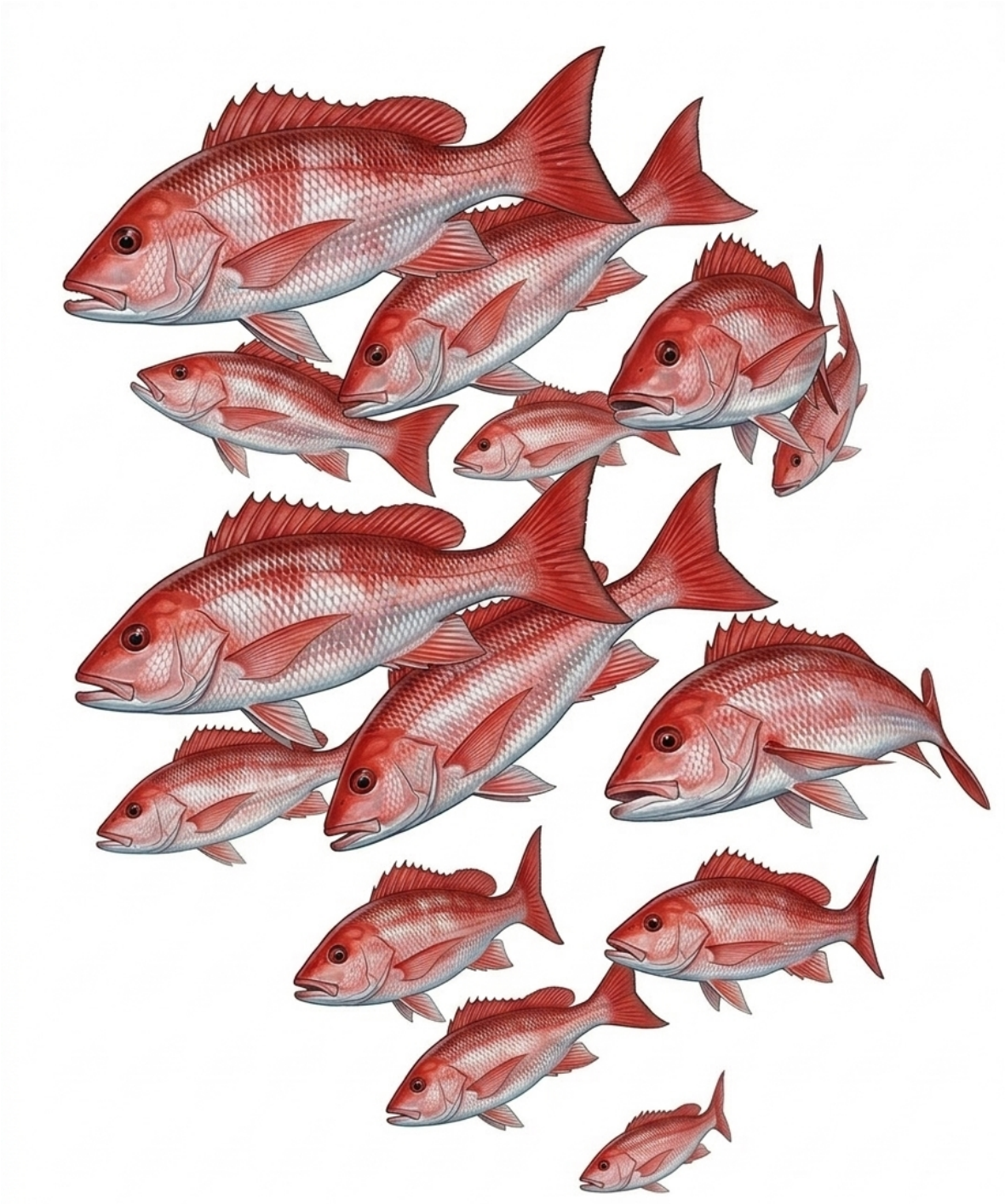
**ORIGIN**

Panamá (Wild Caught)

# OUR FACILITIES

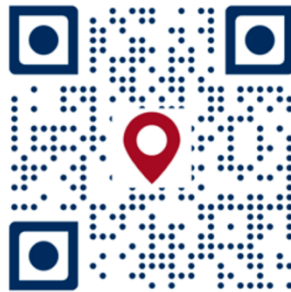


BLUE WATERS PANAMA





EXPORT QUALITY SEAFOODS



### Contact us

 [www.bluewaterspanama.com](http://www.bluewaterspanama.com)

 [@bluewaterspanama](https://www.instagram.com/bluewaterspanama)

 +507 385-5599 / 6980-5213

 [Info@bluewaterspanama.com](mailto:Info@bluewaterspanama.com)

 Tocumen, La Siesta 232-A, Panama

